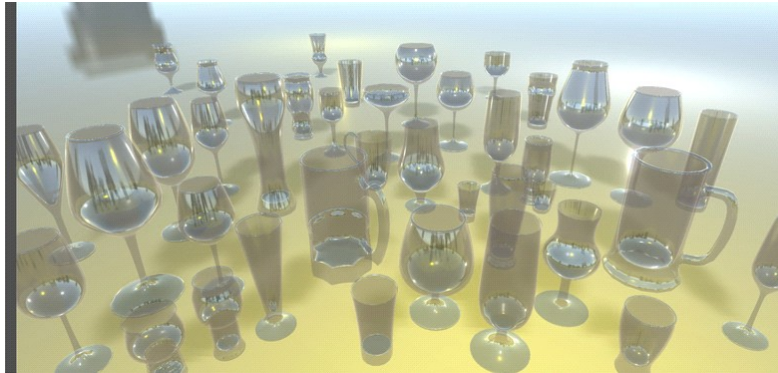


# 39 Realistic Drinking Glasses



*This document describes usage guidelines for the 39 Realistic drinking glasses asset developed by Rob Reijnen.*

## **This asset contains 39 precisely modelled real world drinking glasses.**

For each glass there is an empty, filled, shattered version. And another set of lightweight prefabs for mobile. It also contains a liquid volume compatible prefab for each glass, to work with Liquid volume by Kronnect.

Just drag & drop the prefabs into your scene. Scaling is set up correctly (1 unit = 1 meter). The empty glass prefabs are breakable on click but ofcourse, you are free to use them as you see fit.

## **List of all glasses:**

Beerglass_1:	Flute
Beerglass_2:	Snifter
Beerglass_3:	Tulip
Beerglass_4:	Tulip
Beerglass_5:	Snifter
Beerglass_6:	Pilsner
Beerglass_7:	Weizener
Beerglass_8:	Stein
Beerglass_9:	Orchard
Beerglass_10:	Mikasa's Brewmaster glass
Beerglass_11:	Sampler

Beerglass_12:	Flute
Beerglass_13:	Thistle
Beerglass_14:	Tulip
Beerglass_15:	Goblet
Beerglass_16:	Nonik Pint
Beerglass_17:	Shaker Pint
Beerglass_18:	TeKu
Beerglass_19:	Oversized Wine
Beerglass_20:	Sam Adam's
Beerglass_21:	Stange
Hardcider_1:	Apple Cider
Mug_1:	Mug
Shotglass_1:	Shotglass
Shotglass_2:	Shotglass
Teacup_1:	Teacup
Wineglass_1:	Riesling
Wineglass_2:	Port
Wineglass_3:	Sampler
Wineglass_4:	Sauvignon Blanc
Wineglass_5:	Riesling
Wineglass_6:	Shiraz
Wineglass_7:	Tulip
Wineglass_8:	Bordeaux
Wineglass_9:	Burgundy
Wineglass_10:	Chardonnay
Wineglass_11:	Coupe/Saucer
Wineglass_12:	Montrachet
Wineglass_13:	Pinot Noir

## **Compatibility with Liquid Volume:**



To use this asset with Liquid volume by Kronnect, you must import that asset to your project. The liquid volume prefabs are then able to load the required script to make them work instead of just showing up purple. This should work without any more steps.

## **Contact information:**

Don't hesitate to contact the developer of this asset at: [assets@robreijnen.nl](mailto:assets@robreijnen.nl)